

ENGLISH

NOVEMBER > DECEMBER 2020



Bilbao

society and
contemporary culture

AZKUNA
ZENTROA
ALHÓNDIGA
BILBAO



BABESTU, AN EXTRAORDINARY SUPPORT PROGRAMME FOR CONTEMPORARY CREATION

Babestu has chosen ten projects

All in all, 103 projects were presented to this extraordinary open call a few months back, with a view to preventing artistic creation stagnation due to the Covid-19 crisis. The works by: [Elena Aitzkoa](#), [Maider Aldasoro](#), [Borja Crespo & Raquel Meyers](#), [Irati Inoriza](#), [Miriam Isasi](#), [Sahatsa Jauregi](#), [Karlos Martinez](#), [Camila Téllez](#), [Josune Urrutia](#) and [Iker Vázquez](#) were chosen amongst these projects.



Sahatsa Jauregi Azkarate *Aizkora (Ax)*

Aizkora is a research work in which for years the artist has collected images that show

the way in which the cultural history of the Basque Country has been iconographically constructed through a specific object: the ax. This album has considered formal, symbolic, sociological, biographical, filmic and even animistic aspects of the ax, creating a body of references that hope to be propped up in reality through sculpture.

Image: Arte y crítica



Camila Téllez *Transición primaveral (Spring transition)*

From the autobiography as a reference, *Transición primaveral* is a research

based on the memory of the body and its continuous reconstruction of identity and transformation of subjectivity, taking as a reference the recent controversial vampiric figures from literature to cinema, figures that continue to mutate and reflect contemporary times.



Raquel Meyers & Borja Crespo *Elige tu propia normalidad (Chose your own normality)*

Elige tu propia normalidad arose from

the urgency of a critical reflection on the new perspectives on a future that nobody can decipher, beyond the unfathomable influence of the digital. Life on the net, without a net. The project aims to create a space for dialogue and criticism in these pandemic times, of change that perhaps is not such, of hollow transformation and superficial goals.

Image: bifm



Josune Urrutia *Onko*

Onko is a space for thought, reflection and transversal creation on issues concerning art and health. It involves

people who have experienced illness, users and professionals in healthcare, culture and/or those interested in these issues.



Elena Aitzkoa

Lendia Song

Lendia Song is a performative collaborative project revolving around Lendia Lake, where

the relationship between nature and landscape is manifested through song, audio-visual and dance, to create an audio-visual songbook choreography.

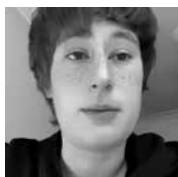


Mainer Aldasoro

Eterno Noeterno
(*Eternal Not eternal*)

Eterno Noeterno is a set of performative actions representing an exaggeration

of desire, executed with or without the presence of other people. To quote the artist: «To work from desire, although it's not my desire. A body which is born alone is born by mistake. Strength is in the doing. If I didn't perform, I wouldn't exist. It makes no sense unless you share».



Irati Inoriza

Nadie se baña dos veces en el mismo río, sino en el pantano mismo (No one bathes twice in the same river, but in the same swamp)

The project is presented as an audio-visual installation based on several performances and an anthropological archive nourishing our identities, through plastic corporality, with its reality, sign and metaphor.



Iker Vázquez

Az Reality Lab

Az Reality Lab

project aims to be an ephemeral work space on the representation of

women. It is a participatory process open to creative women, with the ultimate aim of proposing new representations that articulate alternatives to the current symbolic objectification.



Miriam Isasi

Resina, brea y glicerina (Resin, pitch and glycerin)

It is all about research linked to the identity of the landscape

that takes as its point of origin the use of medicinal plants and their immune systems. The search will begin in the coniferous forests, taking the resin in rock as a common thread throughout the development of the project.



Karlos Martinez B.

Plan K. Gut

Plan aspires to be a discontinuous space dedicated to the presentation of art

projects, which will seek to fit into places other than the usual exhibition halls and auditoriums, establishing cross-sectional dialogues between different agents and institutions, forging networks that generate forms of collaboration.

Babestu, an extraordinary support programme for contemporary creation, is a call to drive creation aimed at local artists and cultural agents whose processes and research have been affected by the Covid-19 crisis.

ENGLISH

JANUARY FEBRUARY MARCH 2021



AZKUNA
ZENTROA
ALHÓNDIGA
BILBAO

Bilbao

society and
contemporary culture

BABESTU, AN EXTRAORDINARY SUPPORT PROGRAMME FOR CONTEMPORARY CREATION

Babestu: projects in progress

Some of the artists chosen in the extraordinary Babestu call already inhabit the [Lantegia space](#) and are working on the [creative processes](#) of their projects

Karlos Martínez B.



«A beginning is like the body of a hole. How does it happen? Where does it start and finish? Can it be broken down? How long does it last? And, what does it become when it's no longer what it was? This course beginning, likewise the beginning of the year, means a lot of new things for me, including my work as a resident in AZ Lantegi 1. I am finding my place in the space, institution, home, with the people living there, so I can locate the project within the space, institution, home, with the people living there».

Karlos Martínez B.

Plan K. Gut

Audiovisual

«This project has an audio-visual format, and we are working via the interview. Me, from the performance, and Eszter, from the camera. Regarding conceptual topics, this project is based on the idea of vampire from the queer perspective», Camilla Téllez.

«In this sense, we are working by choosing spaces and comprehending which place can offer us something. We have been intensely shooting the different AZ spaces in an attempt to encounter intimate space within the different architectures of the Centre, and finding those intimate spaces has been really complicated».

Camilla Téllez

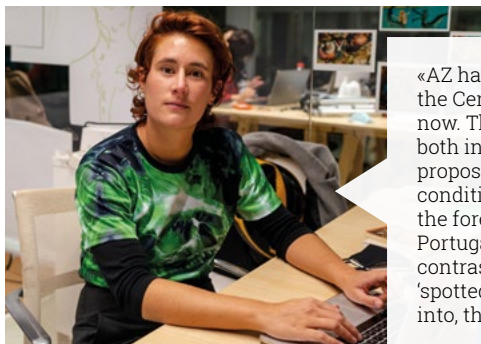
In collaboration with Eszter Katalin

Transición primaveral (Spring transition)

Performance y audiovisual



Eszter Katalin & Camilla Téllez



«AZ has been driving practical research work in the Centre via the BABESTU residence for a month now. The day to day work at the studio facilitates both inter-relationship and motivation for the proposed collaborations. As the relationship conditions improve, I execute, for security, the foreseen schedule, taking notes with the Portugaleta synchronised swimming team, and contrasting places where Lamiak have been 'spotted', linked to the images we turn our myths into, the transformation of our current civilisation».

Irati Inoriza

Nadie se baña dos veces en el mismo río, sino en el pantano mismo (Nobody bathes twice in the same river, but in the same swamp)

Performance

«During this first stage at AZ, I find myself in the process of experimenting and researching my project. I am working on the creation of new 'artefacts' where I am trying to externalise common intimate desires, moved privately and under cover. In addition to the pieces already created, I am currently focused on a new creation in 2 person game format where one wins and the other loses. During this space and time, I am also working on the theoretical base of the project, reflecting on the shape it will take, from the performative to the theatrical».



Maidier Aldasoro

Eterno Noeterno (Eternal Not Eternal)

Video-performance

Meeting - discussion

Thursday, 18 February

6.30 pm TK202

Camila Téllez & Eszter Katalin with Elena Aitzkoa

The artists [Camila Téllez & Eszter Katalin](#) and [Elena Aitzkoa](#) present their projects in a meeting/discussion, where they will share their experiences and discuss their creative processes. These bi-monthly meetings are intended to making more accessible and sharing the work of the Az's residence artists.

The projects chosen through **Babestu. The extraordinary support programme for contemporary creation**, are led by artists with different profiles and careers. All of them are linked to the programme and always have a public part, either through the work done or their creative processes.